

# Miriam Lord – Worksheet 2



Using the source – try answering the following questions:

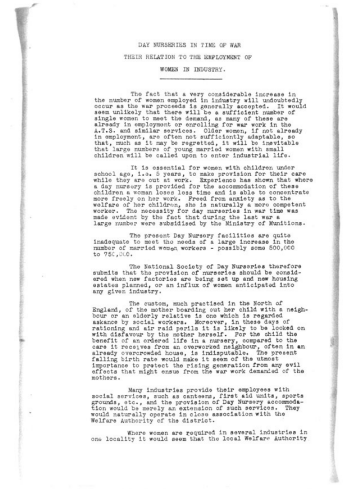
1. Why during War-time will more women work?

2. What age-range of women does the source claim will more typically work during the war? Do you agree with the reasoning offered for this?

3. What benefits would a nursery offer for working women?

4. What benefits would nurseries offer children?

5. How does the source try to encourage society to plan ahead with the introduction of nurseries?



n.d, Miriam Lord of Bradford, educationalist and community worker, Bradford community centre committee and Margaret McMillan memorial committee: general, day nurseries in time of war. 22D77/3/4/57/001, Bradford (GB 202)